

# Sandefjord Næringsforening

7. april 2022



## Tilbakeblikk og optimisme

Gisle Skansen

Tine Kleive-Mathisen



**TORP**  
Sandefjord lufthavn

# Team TORP



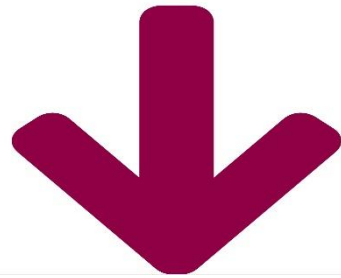
# Sannhetens øyeblikk...





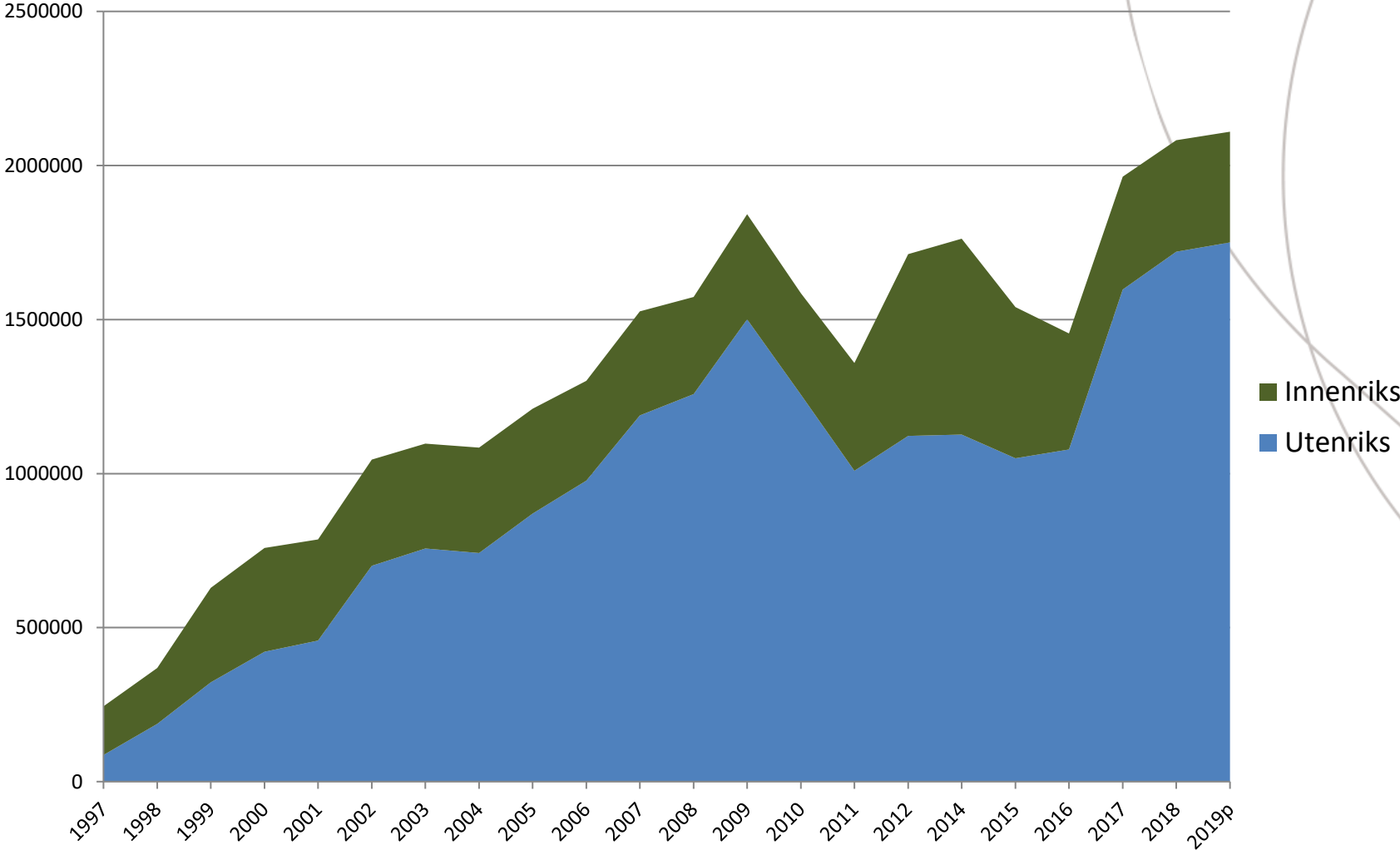
Verdier og ambisjon

ENKEL  
TILGJENGELIG  
VENNLIG  
PREIS



Min favoritt flyplass

# Passasjerutvikling



# Destinasjoner 2020



- 📍 Krakow-Katowice
- 📍 Warszawa
- 📍 Gdansk
- 📍 Poznan
- 📍 Lublin
- 📍 Szczecin
- 📍 Wroclaw
- 📍 Riga
- 📍 Vilnius
- 📍 Bucuresti
- 📍 Skopje



- 📍 London
- 📍 Malaga
- 📍 Alicante
- 📍 Gran Canaria
- 📍 Manchester
- 📍 Gdansk
- 📍 Krakow
- 📍 Warszawa
- 📍 Hamburg
- 📍 Katowice
- 📍 Milano
- 📍 Malta



- 📍 Alicante
- 📍 Malaga
- 📍 Las Palmas



- 📍 Wien



- 📍 Amsterdam



- 📍 Stavanger
- 📍 Bergen
- 📍 Trondheim
- 📍 Harstad/Narvik
- 📍 København
- 📍 Stockholm



- 📍 Stockholm

COVID-19

## Kort om hva som har skjedd

- Opp mot 97% inntektssvikt i perioder
- SLH har redusert antall årsverk med 32%
- De aller fleste har vært helt eller delvis permittert
- En rekke kostnadsreduserende tiltak er gjennomført
- Svært begrensede åpningstider
- Begrenset tilbud til de reisende
- Meget godt samarbeid med kommunens helseteam
- Tett dialog med flyselskapene



# Økonomi – hva har skjedd og hva skjer

TORP	Passenger volume			Accounting				
	Domestic	International	Sum	Operating revenues	Operating costs	Operating profit/(loss)	Net finance	Profit before income tax (state aid)
JAN.21	10 567	11 307	21 874	4 543 063	-16 983 995	-12 440 932	-537 325	-12 978 257
JAN.19	26 200	113 128	139 328	23 067 799	-28 160 564	-5 092 765	-879 077	-5 971 842
Δ	-15 633	-101 821	-117 454	-18 524 736	11 176 569	-7 348 167	341 752	-7 006 415
Δ %	-60 %	-90 %	-84 %	-80 %	-40 %	-144 %	-39 %	-117 %

Country/City	Passenger volume				Number of flights			
	JAN.19	JAN.21	Δ	Δ %	JAN.19	JAN.21	Δ	Δ %
Egypt	204	-	- 204	-100 %	2	-	- 2	-100 %
Denmark	4 973	-	- 4 973	-100 %	167	-	- 167	-100 %
Italy	2 384	-	- 2 384	-100 %	18	-	- 18	-100 %
Latvia	4 158	396	- 3 762	-90 %	30	6	- 24	-80 %
Lithuania	6 124	2 075	- 4 049	-66 %	36	24	- 12	-33 %
Netherlands	8 068	-	- 8 068	-100 %	114	-	- 114	-100 %
North Macedonia	2 403	-	- 2 403	-100 %	16	-	- 16	-100 %
Norway	26 200	10 567	- 15 633	-60 %	670	366	- 304	-45 %
Other	10	82	- 72	720 %	4	2	- 2	-50 %
Poland	57 361	7 402	- 49 959	-87 %	438	100	- 338	-77 %
Romania	2 931	1 352	- 1 579	-54 %	20	12	- 8	-40 %
Spain	16 125	-	- 16 125	-100 %	112	-	- 112	-100 %
Sweden	-	-	-	0 %	1	-	- 1	-100 %
Switzerland	6	-	- 6	-100 %	3	-	- 3	-100 %
United Kingdom	8 381	-	- 8 381	-100 %	60	-	- 60	-100 %
Sum	139 328	21 874	-117 454	-84 %	1 691	510	-1 181	-70 %

<https://www.fhi.no/en/op/novel-coronavirus-facts-advice/facts-and-general-advice/entry-quarantine-travel-covid19/>

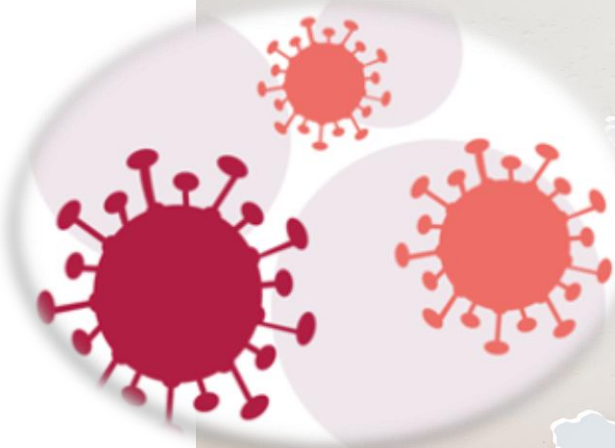
\*RED: Quarantine

Applicable restrictions	
Entering Norway:	-Entry ban in the period January to 1 October. Exceptions were made for certain groups of people, including Norwegian citizens and foreign citizens residing in Norway. In February, the strictest entry rules were introduced since March 2020 and they applied until June. In June, July, August and September, exceptions have gradually been implemented for additional groups of people. The entry ban was lifted on 1 October.
Departing Norway:	-UD's global travel advice has been valid for all trips that are not strictly necessary in the period January to 1 October with some exceptions along the way where all travel to certain areas has been discouraged. -In the period January to 1 October, other countries have had their own rules for entry that apply to Norwegians, for example entry bans (USA), test and quarantine obligation (EEA). Entry bans still apply to Norwegians in some countries (USA). -Test and quarantine obligation when returning to Norway in the period January to 1 October. Initially, there has been an obligation to stay in quarantine hotels when entering Norway from March, also for Norwegian citizens or others living in Norway, but from mid-June there have been exceptions for, among other things, "protected persons". In the period January to March and June to October, it has been possible under certain conditions to carry out the quarantine obligation in your own home.
Domestic travels:	-From January to June all domestic trips have been discouraged. In March and April, the wording of the recommendation was made stricter, and it was encouraged to avoid all unnecessary travel in Norway. In May, exceptions were made for "protected persons".
Other measures:	-From January to 1 October, there have also been bans and recommendations of social distancing ("social distancing measures"), including restrictions of the number of close contacts, requirements for maintaining distance and requirements to work from home. How many close contacts, how much distance and how many groups of people who should work from home have varied during the period.



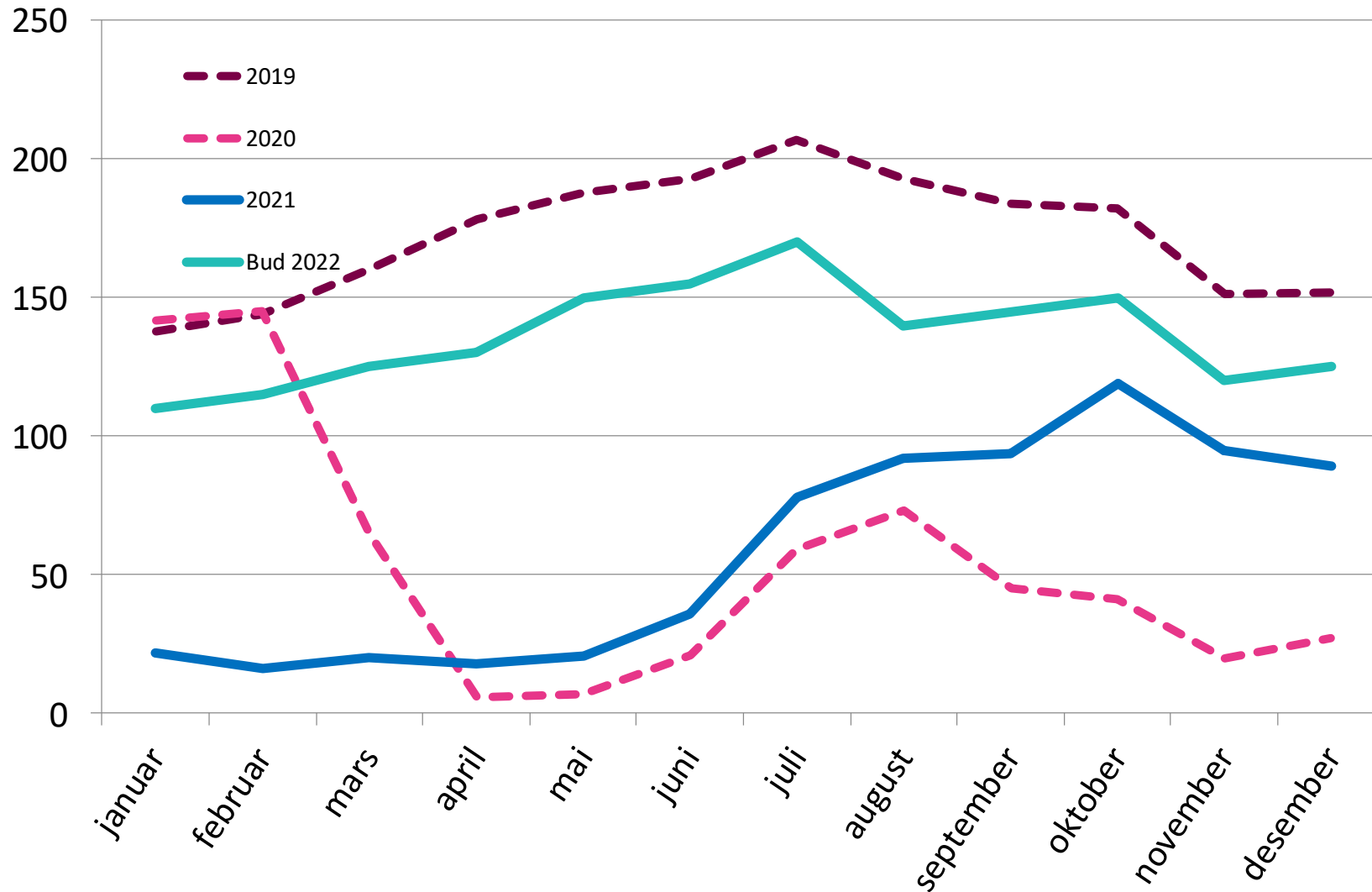


# Fra pandemi til krig... vil det påvirke oss?

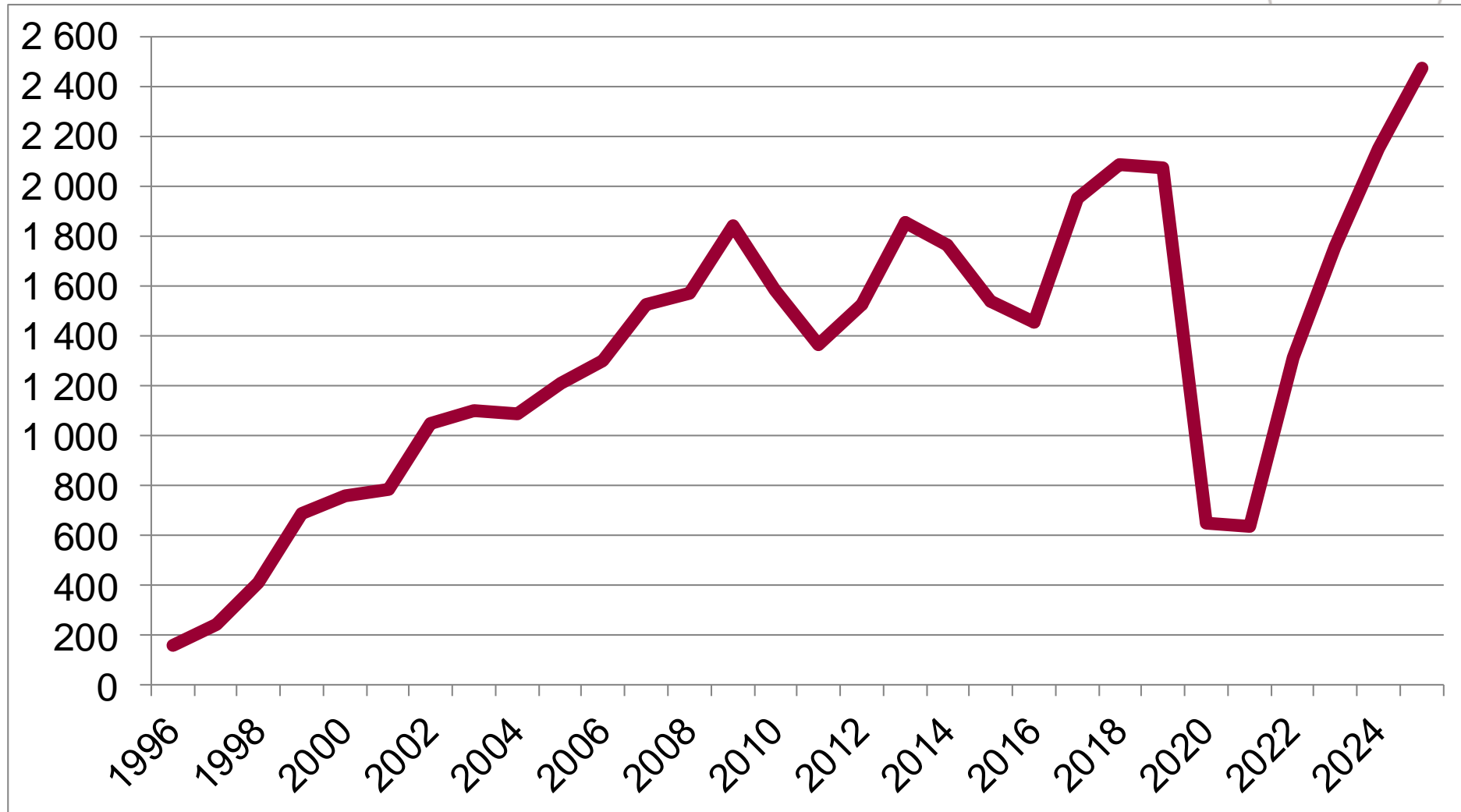


# Passasjerutvikling – veien videre

Antall reisende i tusen



# Tilbake mot 2 millioner ...



Wizz

norwegian



VING

RYANAIR

Laudamotion



apollo



TUI

KLM

widerøe



# widerøe

- Bærebjelken for næringslivet
- Frekvenser til Bergen, Trondheim og Stavanger
- Hub København
- Nord-Norge
- Nice er nice 😊





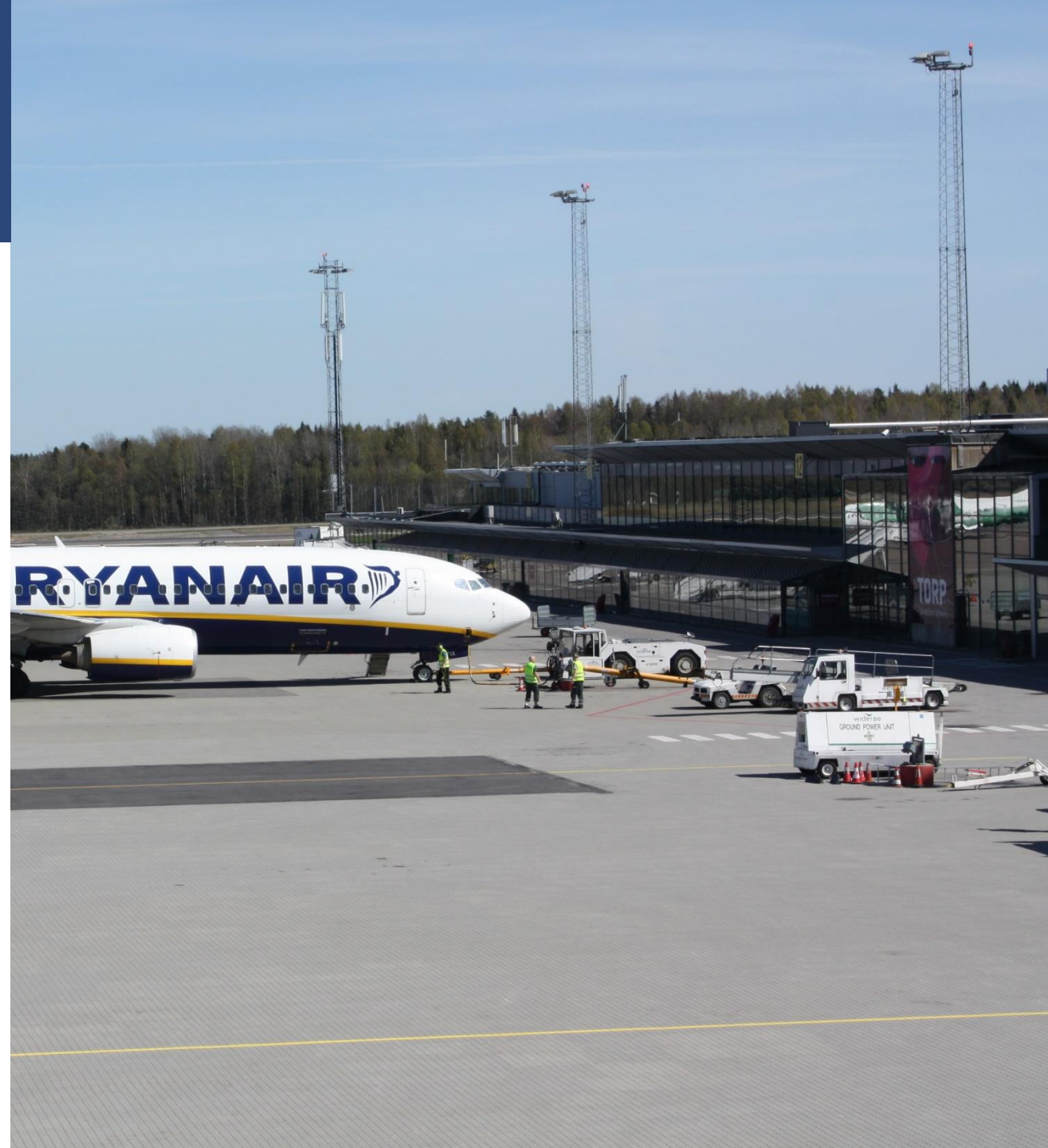


- One stop via Amsterdam  
- til hele verden!
- Usikkert når vi får 2 frekvenser





- 25 år på Torp
- Laveste pris
- Gode på miljø







- 16 år på Torp
- Ser muligheter når andre sliter;
- Tirana
- Sarajevo
- Tallin
- Beograd



# norwegian



- Fra vekst til lønnsomhet
- 2 år borte fra Torp
- 50 - 70 - 100 fly i flåten





- ✦ Krakow-Katowice
- ✦ Warszawa
- ✦ Gdansk
- ✦ Poznan
- ✦ Lublin
- ✦ Szczecin
- ✦ Wroclaw
- ✦ Riga
- ✦ Vilnius
- ✦ Bucuresti
- ✦ Skopje
- ✦ Rzeszów
- ✦ Tallin
- ✦ Tirana
- ✦ Sarajevo
- ✦ Beograd



- ✦ London
- ✦ Malaga
- ✦ Alicante
- ✦ Manchester
- ✦ Gdansk
- ✦ Krakow
- ✦ Warszawa
- ✦ Wroclaw
- ✦ Milano
- ✦ Poznan
- ✦ Riga
- ✦ Zagreb
- ✦ Wien
- ✦ Palma Mallorca



- ✦ Stavanger
- ✦ Bergen
- ✦ Trondheim
- ✦ København
- ✦ Harstad/Narvik
- ✦ Bodø
- ✦ Nice



- ✦ Amsterdam

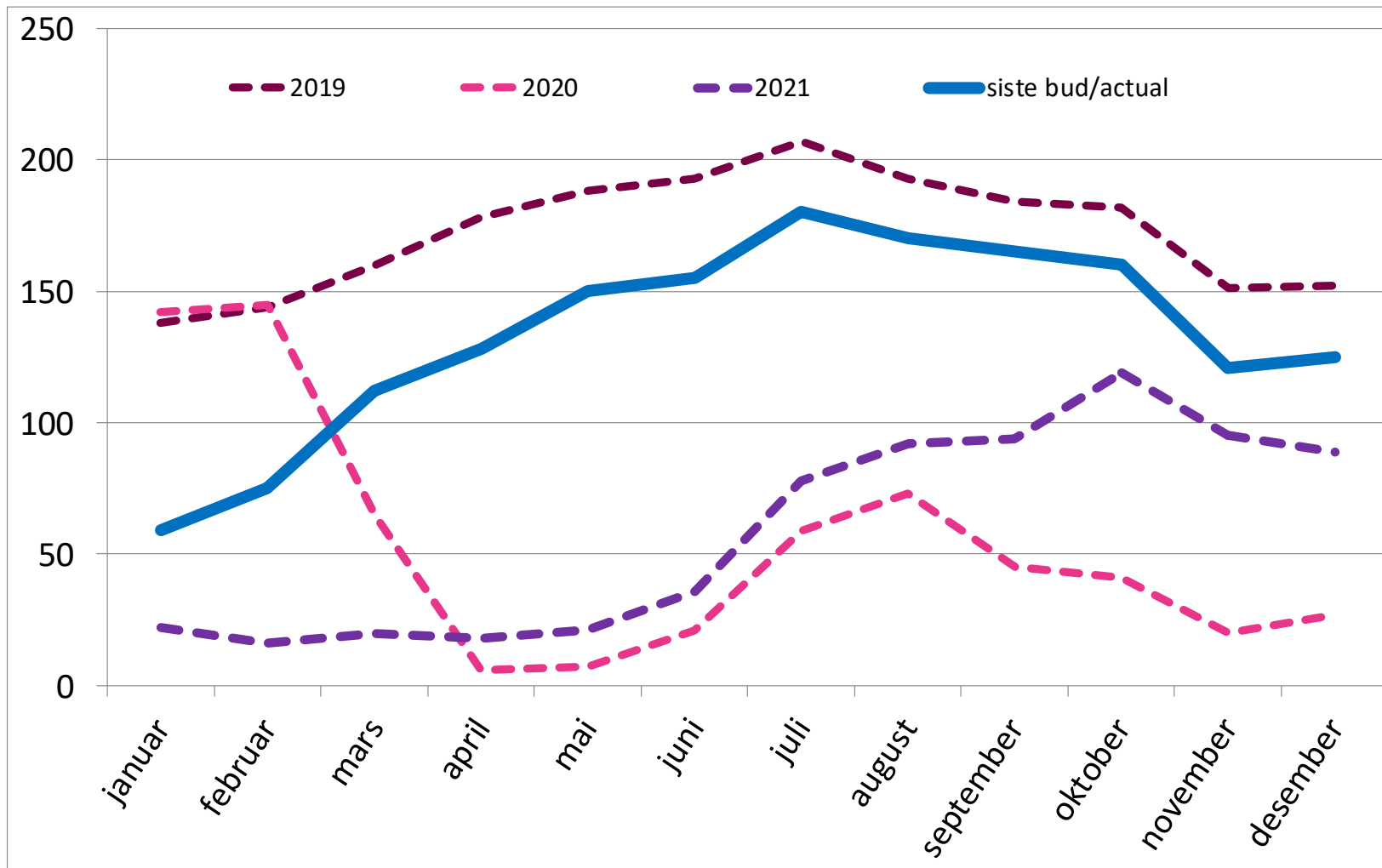
**norwegian**

- ✦ Alicante
- ✦ Malaga

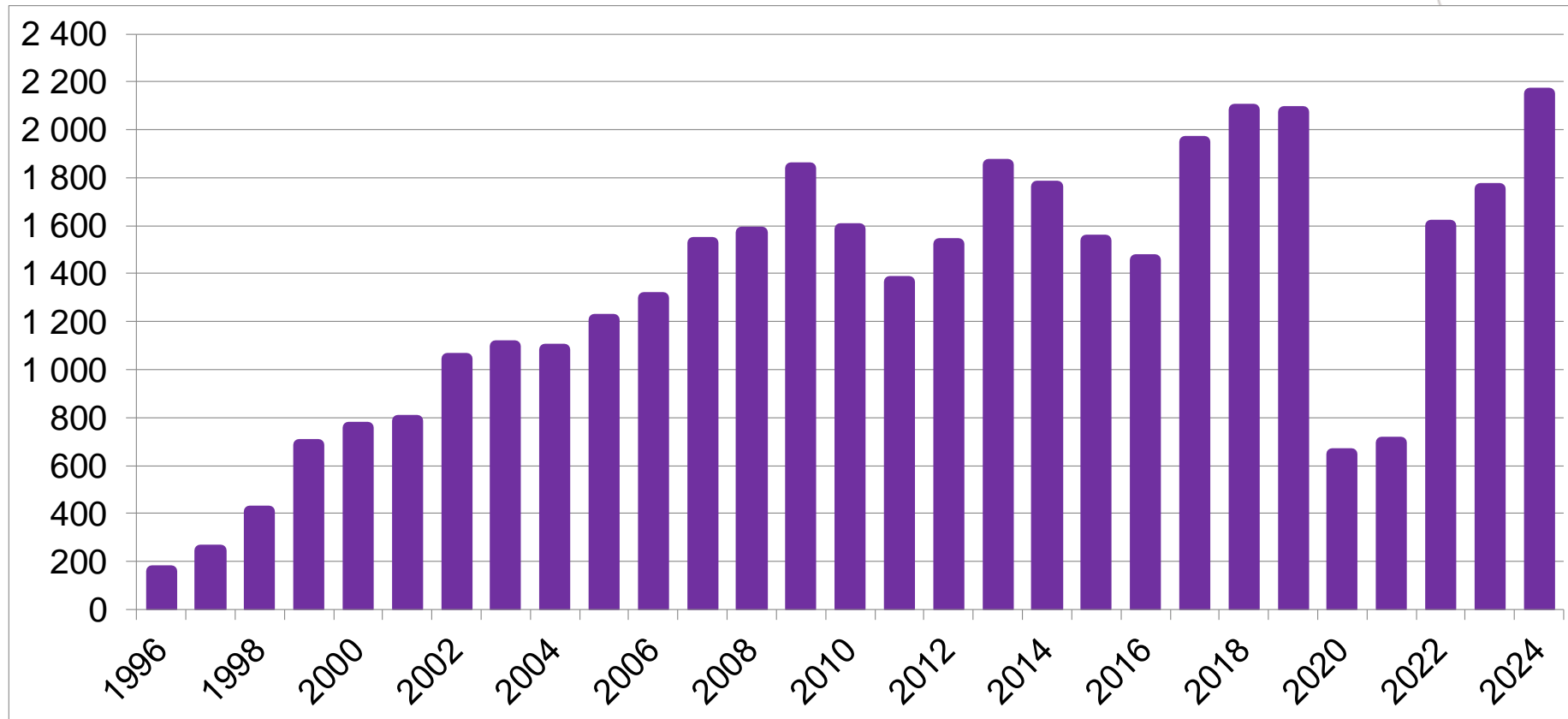


# Veien videre 2019 – 2022

Antall reisende i tusen



# 2 millioner i 2024



# TORP stasjon – snart en realitet 😊



## Innhold

### Spør og ved

Starter rett sørvest for Skokka stasjon sørtrasa via Torp vestskolekoleen til Visk

### Stasjon

Torp stasjon og Sandefjord stasjon



